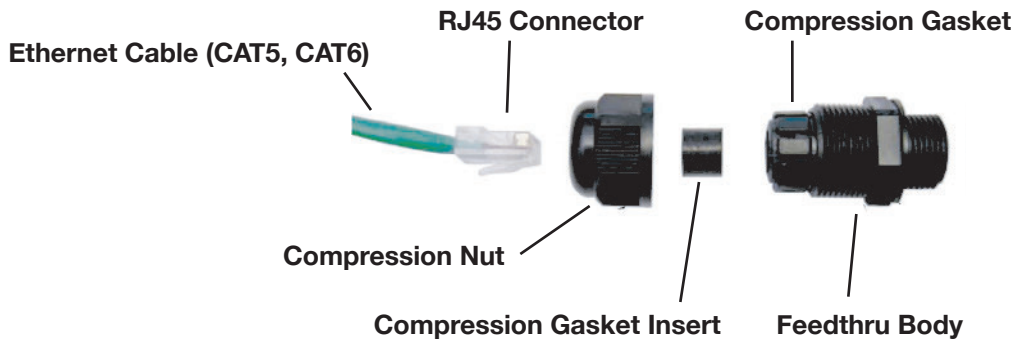


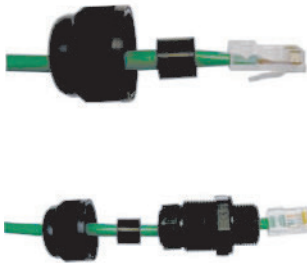
RJ-45 FEEDTHRU INSTALLATION GUIDE

DIAGRAM



Effective Cable Diameter Clamping Range: 0.2" to 0.5" (5mm to 12.7mm)

PRE-ASSEMBLY



- Remove **Compression Nut** and slip over the **Ethernet Cable**.
- Slip the **Compression Gasket Insert** over the **RJ45 Connector** and **Ethernet Cable**.
- Feed the **Ethernet Cable** through the **Feedthru Body** on the enclosure and attach to the mating **RJ45 connector**.

ASSEMBLING COMPRESSION GASKET INSERT



- Slide the **Compression Gasket Insert** into the **Compression Gasket**.
- Insert until the ends of the two gaskets are even.
- Install the **Compression Nut** and tighten until the cable will not move when gently pushed.